

- | | | | |
|------------------------------------|--|---|--|
| Row Crops | South Texas: Sandy Mesquite - Evergreen Woodland | South Texas: Sandy Mesquite Dense Shrubland | South Texas: Sandy Mesquite Woodland and Shrubland |
| South Texas: Disturbance Grassland | | | Urban Low Intensity |

Legend:

- Drain Flow
- Study Corridor

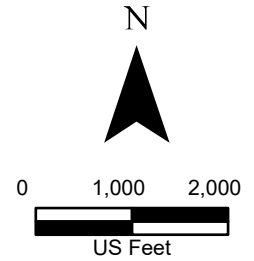
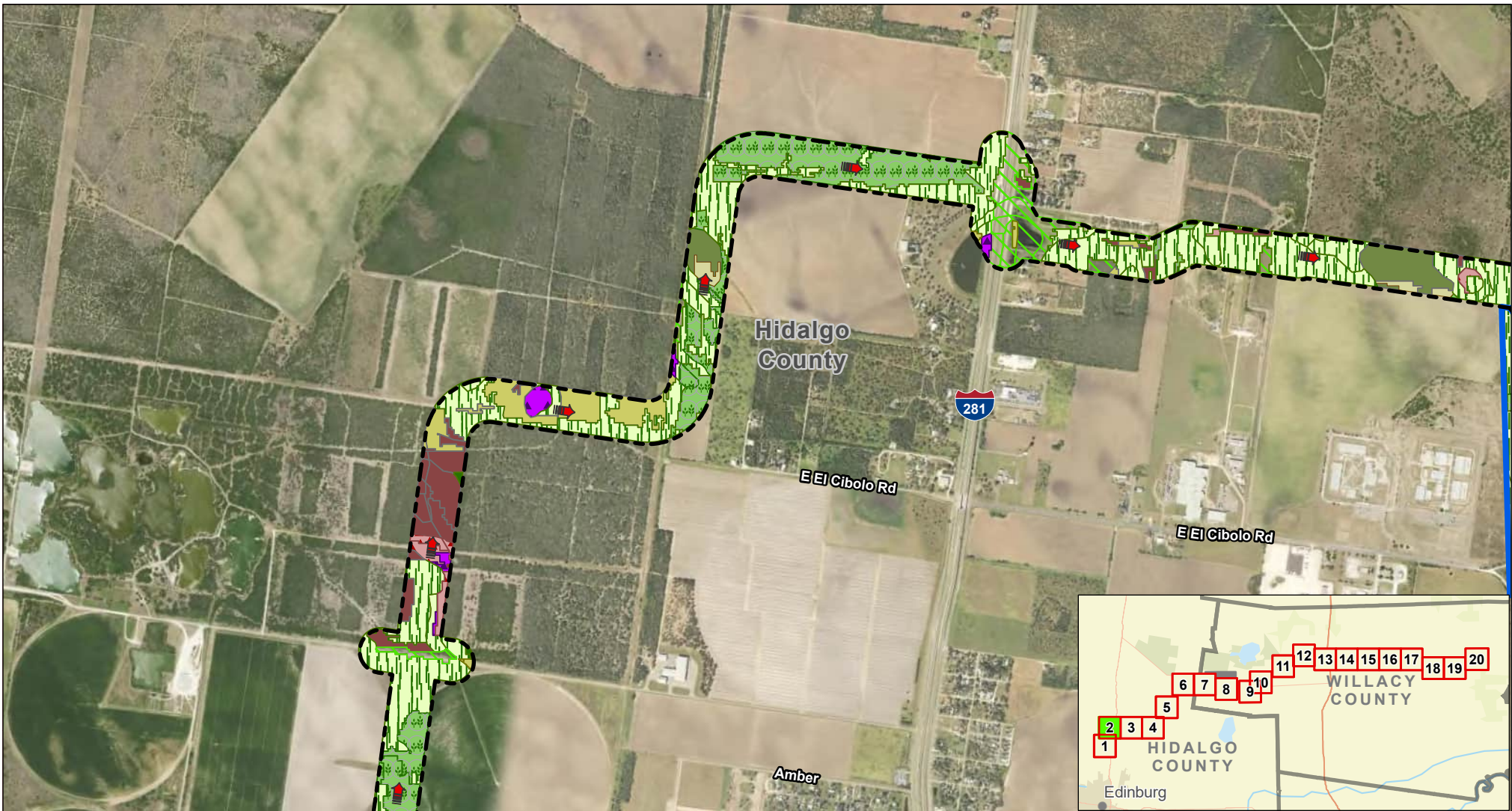


Exhibit 12 Alternative 1 EMST Map Sheet 1 of 20 Raymondville Drain Project

Author : Joel F. Aguirre Updated : 9/26/2023

DISCLAIMER: RRP Consulting Engineers makes no guarantees as to the accuracy of data used in the construction of this map.



- | | | | | |
|-----------|--|--|---|--|
| Barren | South Texas: Clayey Blackbrush Mixed Shrubland | South Texas: Sandy Disturbance Grassland | South Texas: Sandy Mesquite Dense Shrubland | South Texas: Sandy Mesquite Woodland and Shrubland |
| Marsh | South Texas: Clayey Mesquite Mixed Shrubland | South Texas: Sandy Mesquite - Evergreen Woodland | South Texas: Sandy Mesquite Savanna Grassland | Urban Low Intensity |
| Row Crops | | | | |

- Legend:**
- Drain Flow
 - Study Corridor
 - Proposed Detention Basin

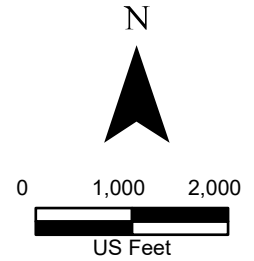
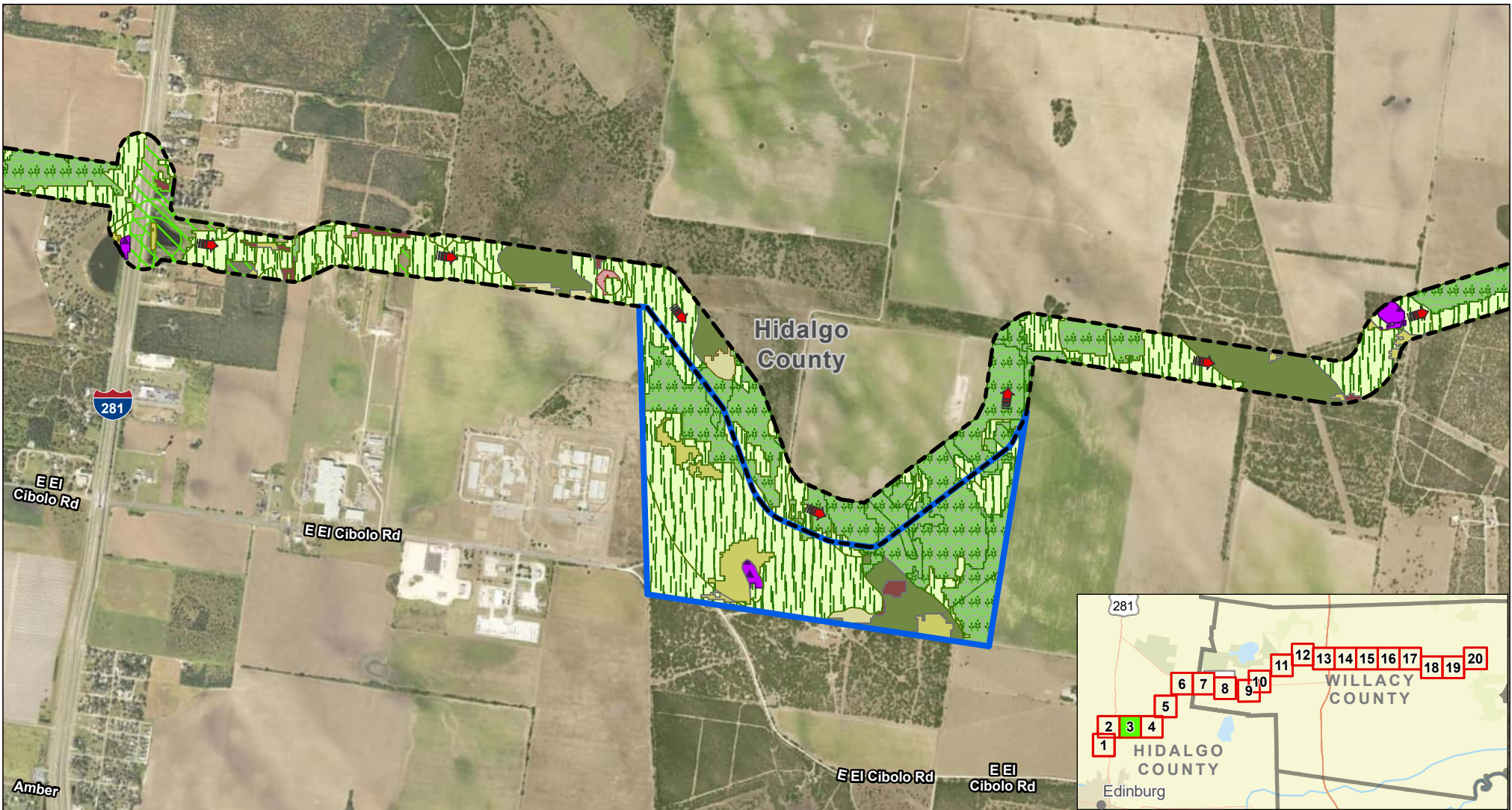


Exhibit 12 Alternative 1 EMST Map Sheet 2 of 20 Raymondville Drain Project

Author : Joel F. Aguirre Updated : 9/26/2023

DISCLAIMER: RRP Consulting Engineers makes no guarantees as to the accuracy of data used in the construction of this map.



- | | | | | |
|-----------|--|--|---|--|
| Barren | South Texas: Clayey Blackbrush Mixed Shrubland | South Texas: Sandy Disturbance Grassland | South Texas: Sandy Mesquite Dense Shrubland | South Texas: Sandy Mesquite Woodland and Shrubland |
| Marsh | South Texas: Clayey Mesquite Mixed Shrubland | South Texas: Sandy Mesquite - Evergreen Woodland | South Texas: Sandy Mesquite Savanna Grassland | Urban Low Intensity |
| Row Crops | | | | |

- Legend:**
- Drain Flow
 - Study Corridor
 - Proposed Detention Basin

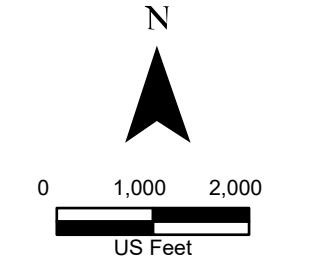
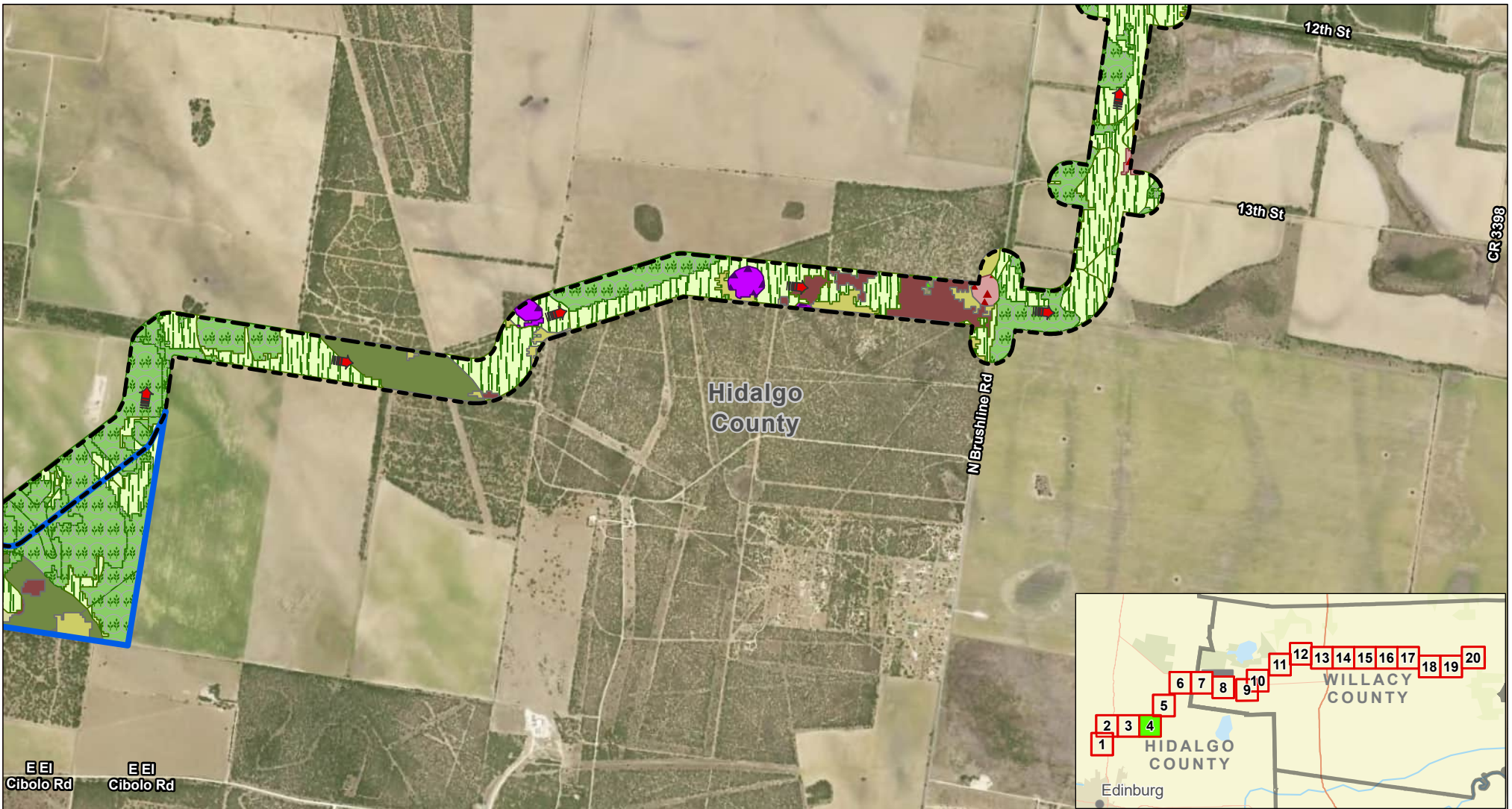


Exhibit 12 Alternative 1 EMST Map Sheet 3 of 20 Raymondville Drain Project

Author : Joel F. Aguirre Updated : 11/8/2023

DISCLAIMER: RRP Consulting Engineers makes no guarantees as to the accuracy of data used in the construction of this map.



- | | | | | |
|-----------|--|---|---|--|
| Marsh | South Texas: Clayey Mesquite Mixed Shrubland | South Texas: Sandy Mesquite Dense Shrubland | South Texas: Sandy Mesquite Savanna Grassland | South Texas: Sandy Mesquite Woodland and Shrubland |
| Row Crops | South Texas: Clayey Blackbrush Mixed Shrubland | South Texas: Disturbance Grassland | Urban High Intensity | Urban Low Intensity |

Legend:

- Drain Flow
- Study Corridor
- Proposed Detention Basin

N

0 1,000 2,000

US Feet

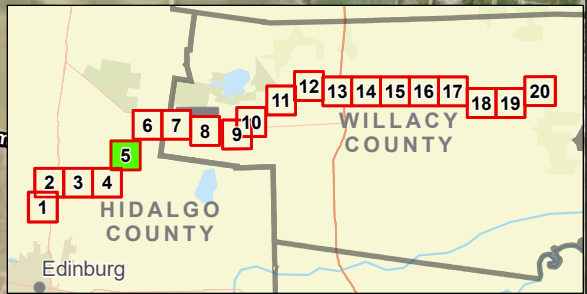
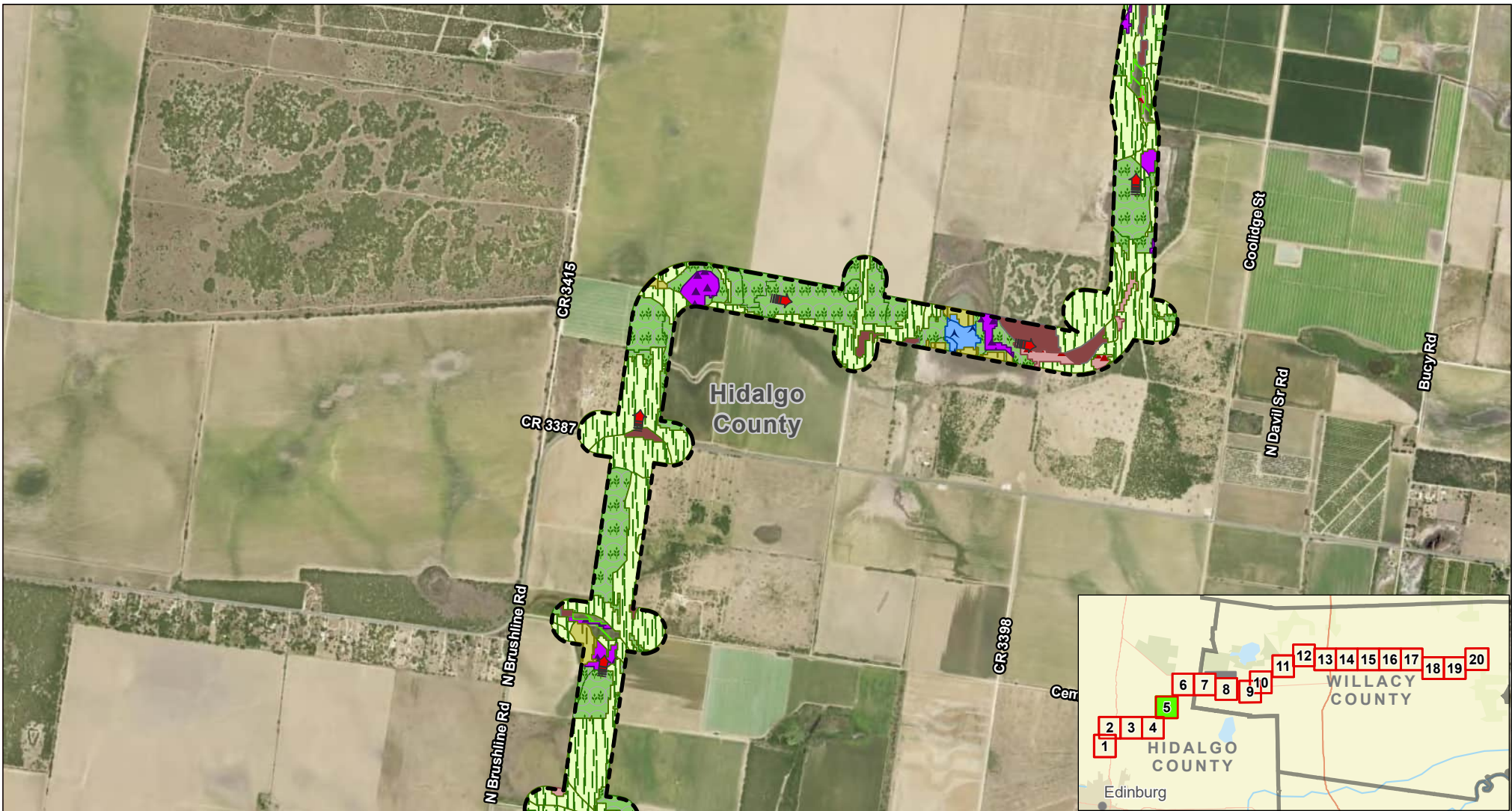
HIDALGO COUNTY
WILLACY COUNTY
TX

Exhibit 12 Alternative 1 EMST Map Sheet 4 of 20 Raymondville Drain Project

Author : Joel F. Aguirre Updated : 9/26/2023

DISCLAIMER: RRP Consulting Engineers makes no guarantees as to the accuracy of data used in the construction of this map.

Path: S:\project\4408000_ProjectRepository\GIS\EMST_Enables\EMST_Series.aprx



- | | | | | |
|------------|--|--|---|--|
| Barren | South Texas: Clayey Blackbrush Mixed Shrubland | South Texas: Clayey Mesquite Mixed Shrubland | South Texas: Sandy Mesquite Savanna Grassland | South Texas: Sandy Mesquite Woodland and Shrubland |
| Marsh | South Texas: Disturbance Grassland | | | Urban High Intensity |
| Open Water | | | | Urban Low Intensity |
| Row Crops | | | | |

Legend:

Drain Flow

Study Corridor

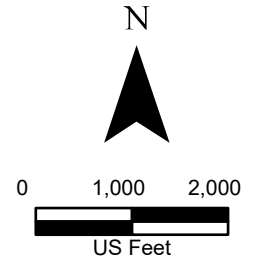


Exhibit 12 Alternative 1 EMST Map Sheet 5 of 20 Raymondville Drain Project

Author : Joel F. Aguirre Updated : 9/26/2023

DISCLAIMER: RRP Consulting Engineers makes no guarantees as to the accuracy of data used in the construction of this map.



- | | | | | |
|-----------|--|---|--|----------------------|
| Barren | South Texas: Clayey Blackbrush Mixed Shrubland | South Texas: Disturbance Grassland | South Texas: Sandy Mesquite Savanna Grassland | Urban High Intensity |
| Marsh | South Texas: Clayey Mesquite Mixed Shrubland | South Texas: Sandy Mesquite Dense Shrubland | South Texas: Sandy Mesquite Woodland and Shrubland | |
| Row Crops | | | | |

Legend:

- Study Corridor
- Drain Flow
- County Boundary

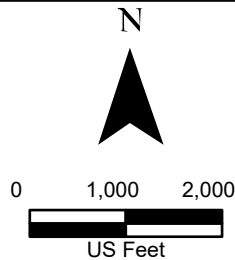
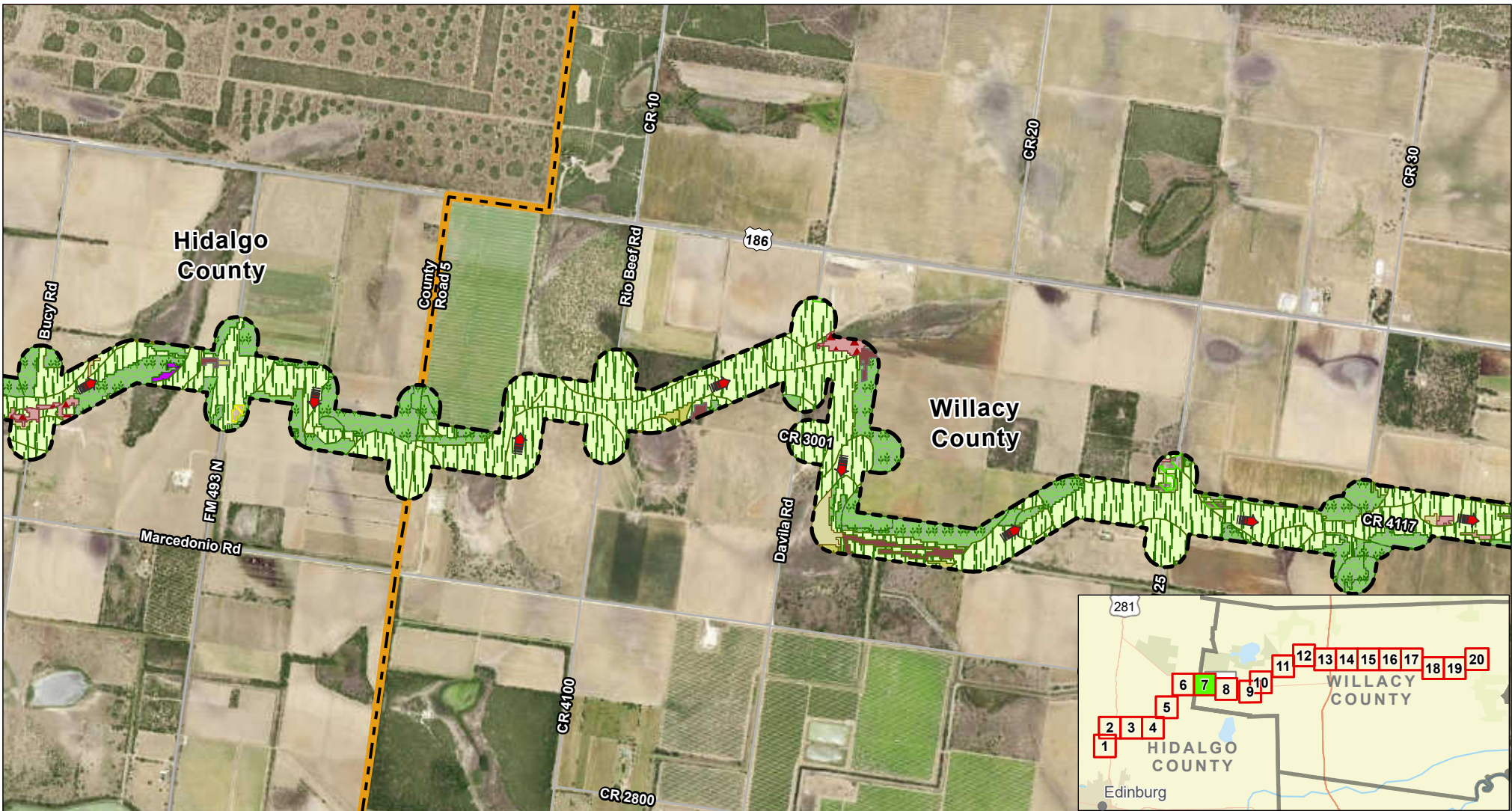


Exhibit 12 Alternative 1 EMST Map Sheet 6 of 20 Raymondville Drain Project

Author : Joel F. Aguirre Updated : 12/13/2023

DISCLAIMER: RRP Consulting Engineers makes no guarantees as to the accuracy of data used in the construction of this map.



- | | | | |
|-----------|--|---|--|
| Barren | South Texas: Clayey Blackbrush Mixed Shrubland | South Texas: Disturbance Grassland | South Texas: Sandy Mesquite Woodland and Shrubland |
| Marsh | South Texas: Clayey Mesquite Mixed Shrubland | South Texas: Sandy Mesquite Dense Shrubland | Urban High Intensity |
| Row Crops | | | Urban Low Intensity |

Legend:

- Study Corridor
- Drain Flow
- County Boundary

N

0 1,000 2,000

US Feet

HIDALGO COUNTY
WILLACY COUNTY
TX

Exhibit 12 Alternative 1 EMST Map Sheet 7 of 20 Raymondville Drain Project

Author : Joel F. Aguirre Updated : 12/13/2023

DISCLAIMER: RRP Consulting Engineers makes no guarantees as to the accuracy of data used in the construction of this map.

Path: S:\project\4408000_Project\Raymondville\GIS\EMST_Enables\EMST_Series.aprx



- | | | | |
|-----------|--|--|---------------------|
| Barren | South Texas: Clayey Mesquite Mixed Shrubland | South Texas: Sandy Mesquite - Evergreen Woodland | Urban Low Intensity |
| Marsh | South Texas: Disturbance Grassland | Urban High Intensity | |
| Row Crops | | | |

Legend:

Drain Flow

Study Corridor

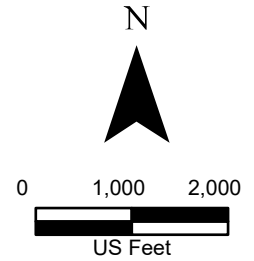
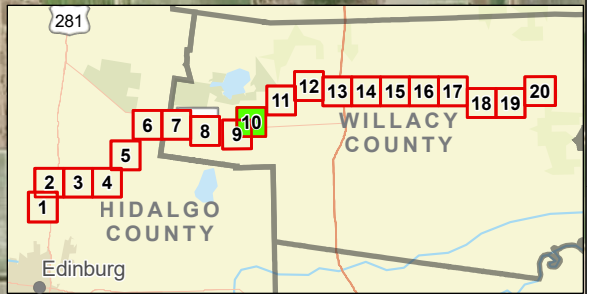


Exhibit 12 Alternative 1 EMST Map Sheet 8 of 20 Raymondville Drain Project

Author : Joel F. Aguirre Updated : 9/26/2023

DISCLAIMER: RRP Consulting Engineers makes no guarantees as to the accuracy of data used in the construction of this map.



- | | | | | |
|--|--|---|--|---------------------|
| Row Crops | South Texas: Clayey Mesquite Mixed Shrubland | South Texas: Sandy Mesquite Dense Shrubland | South Texas: Sandy Mesquite Woodland and Shrubland | Urban Low Intensity |
| South Texas: Clayey Blackbrush Mixed Shrubland | South Texas: Disturbance Grassland | | Urban High Intensity | |

Legend:

Drain Flow

Study Corridor

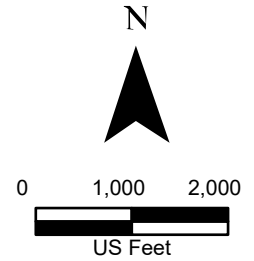
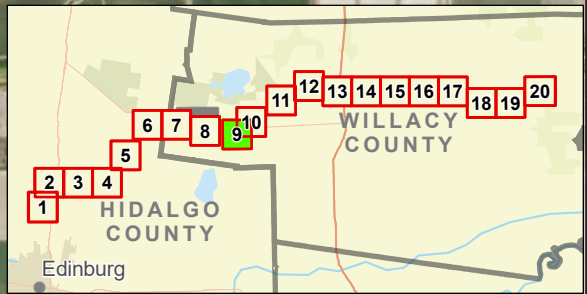
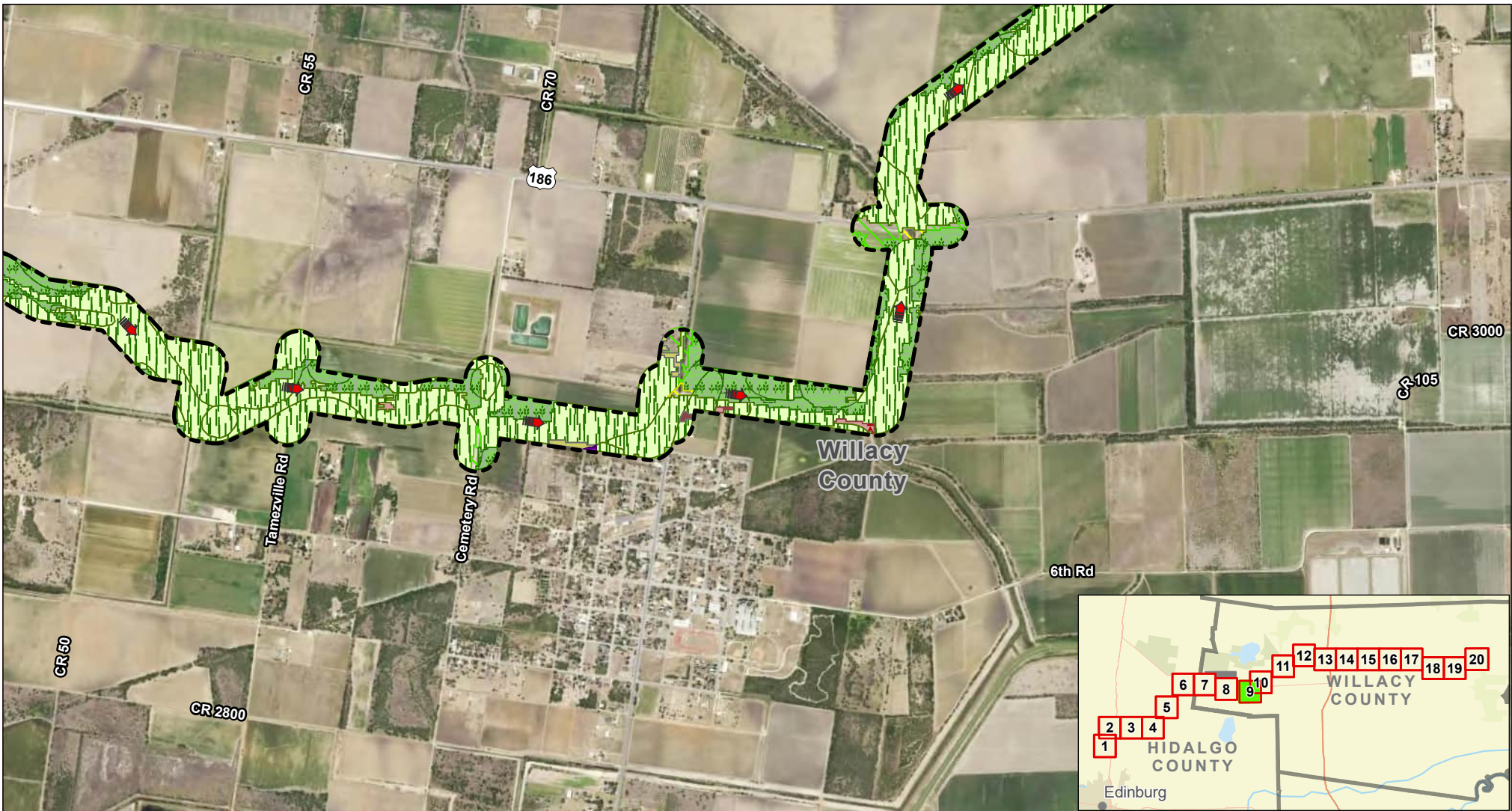


Exhibit 12 Alternative 1 EMST Map Sheet 10 of 20 Raymondville Drain Project

Author : Joel F. Aguirre Updated : 11/8/2023

DISCLAIMER: RRP Consulting Engineers makes no guarantees as to the accuracy of data used in the construction of this map.



- | | | | | |
|--|--|---|--|---------------------|
| Row Crops | South Texas: Clayey Mesquite Mixed Shrubland | South Texas: Sandy Mesquite Dense Shrubland | South Texas: Sandy Mesquite Woodland and Shrubland | Urban Low Intensity |
| South Texas: Clayey Blackbrush Mixed Shrubland | South Texas: Disturbance Grassland | | Urban High Intensity | |

Legend:

- Drain Flow
- Study Corridor

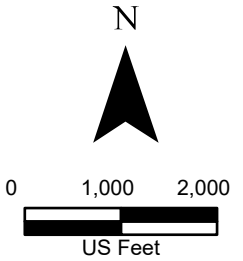
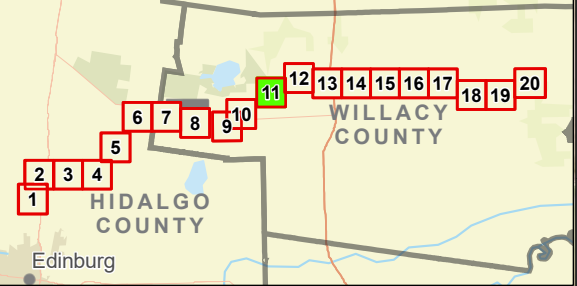
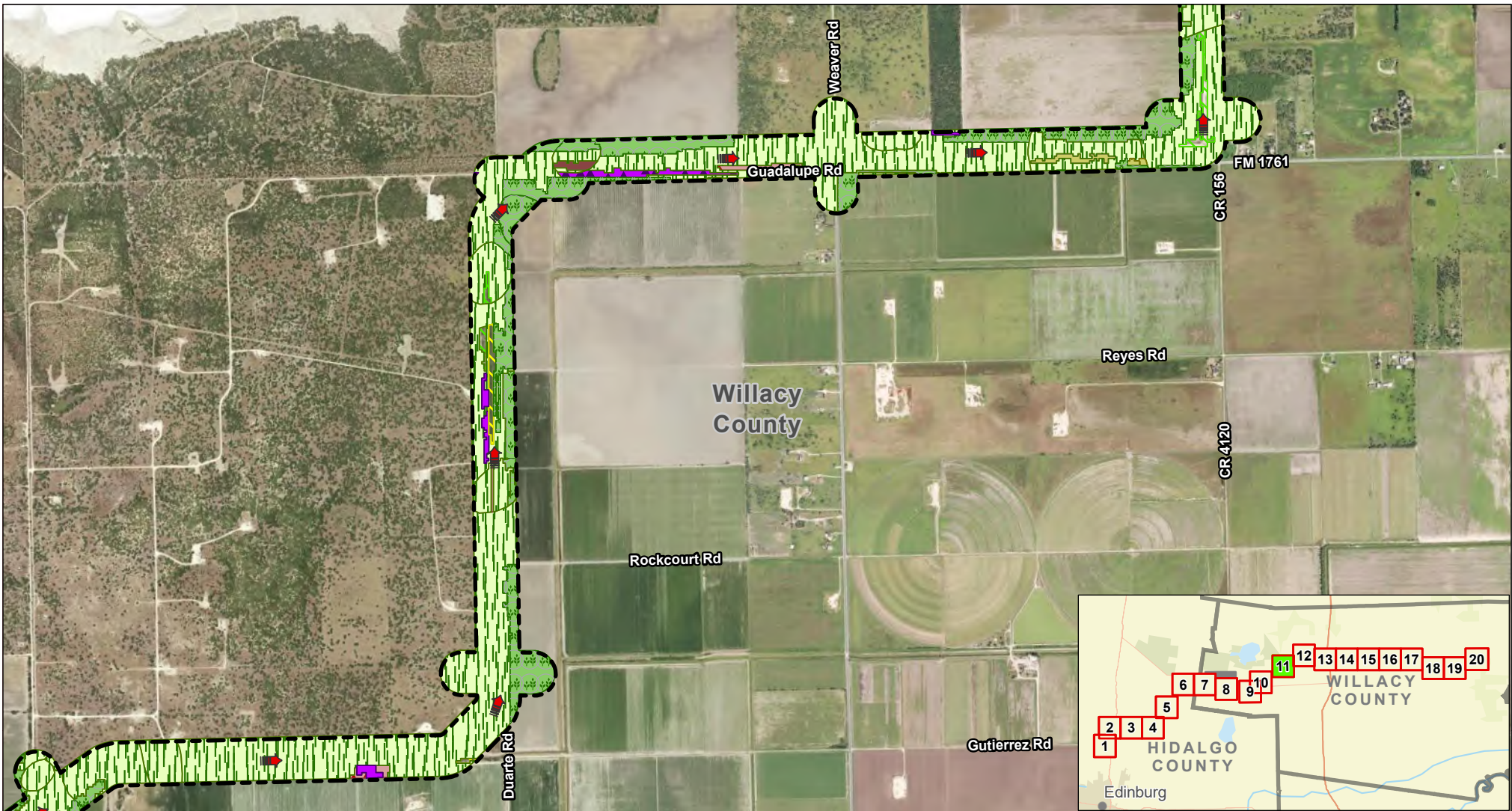


Exhibit 12 Alternative 1 EMST Map Sheet 9 of 20 Raymondville Drain Project

Author : Joel F. Aguirre Updated : 9/26/2023
 DISCLAIMER: RRP Consulting Engineers makes no guarantees as to the accuracy of data used in the construction of this map.



- | | | | |
|---------------------|--|---|--|
| Marsh | South Texas: Clayey Mesquite Mixed Shrubland | South Texas: Sandy Mesquite Dense Shrubland | South Texas: Sandy Mesquite Woodland and Shrubland |
| Row Crops | South Texas: Clayey Blackbrush Mixed Shrubland | South Texas: Disturbance Grassland | Urban High Intensity |
| Urban Low Intensity | | | |

Legend:

Drain Flow

Study Corridor

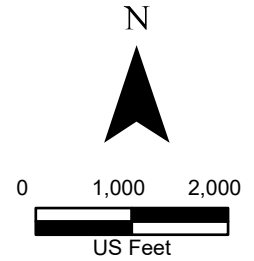
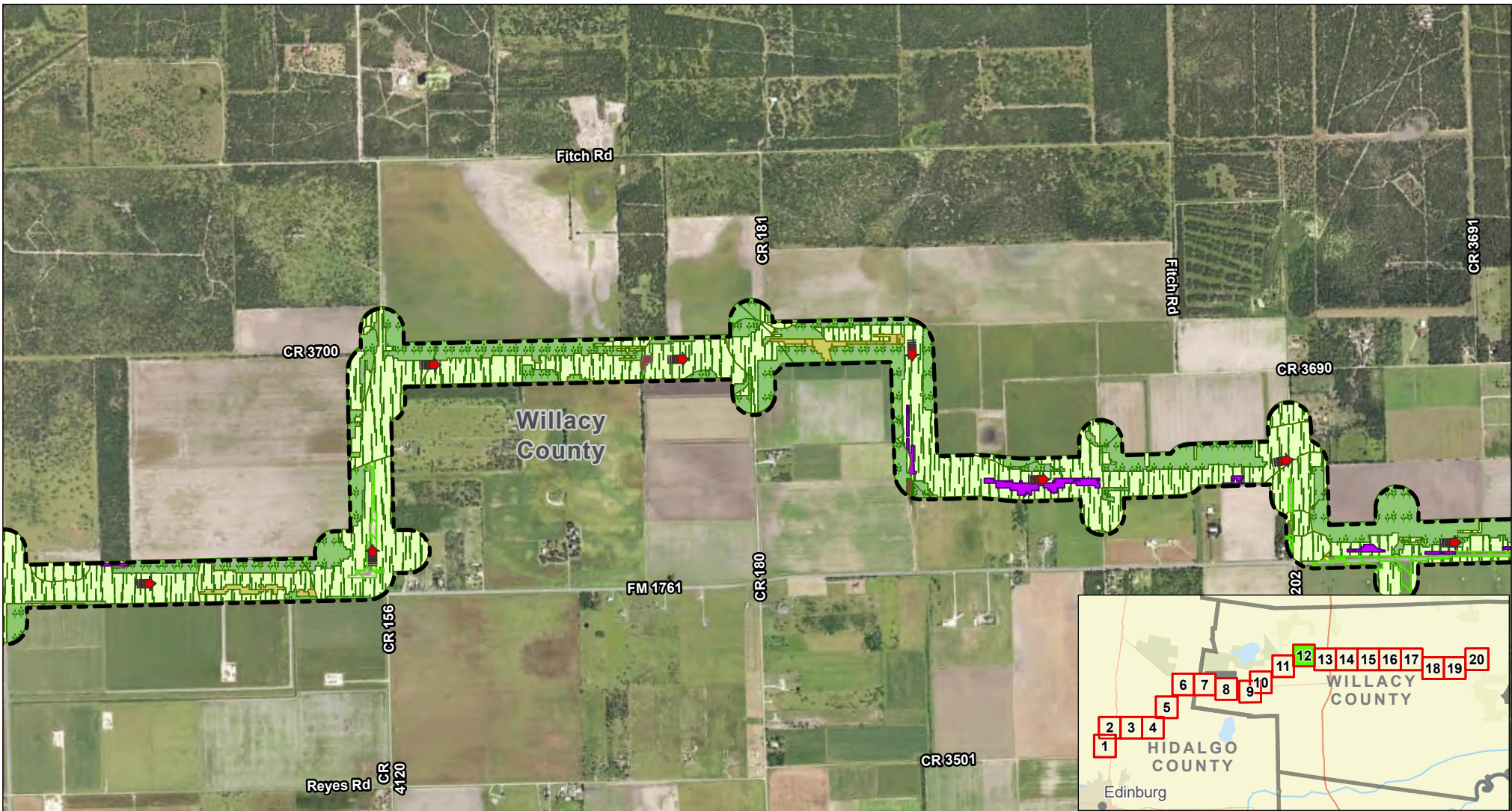


Exhibit 12 Alternative 1 EMST Map Sheet 11 of 20 Raymondville Drain Project

Author : Joel F. Aguirre Updated : 9/26/2023

DISCLAIMER: RRP Consulting Engineers makes no guarantees as to the accuracy of data used in the construction of this map.



- | | | | |
|-----------|--|--|--|
| Marsh | South Texas: Clayey Blackbrush Mixed Shrubland | South Texas: Sandy Mesquite - Evergreen Woodland | South Texas: Sandy Mesquite Woodland and Shrubland |
| Row Crops | South Texas: Disturbance Grassland | Urban Low Intensity | |

Legend:

Drain Flow

Study Corridor

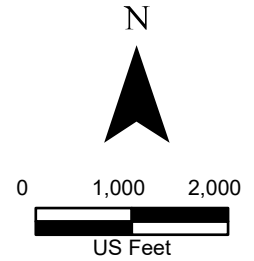
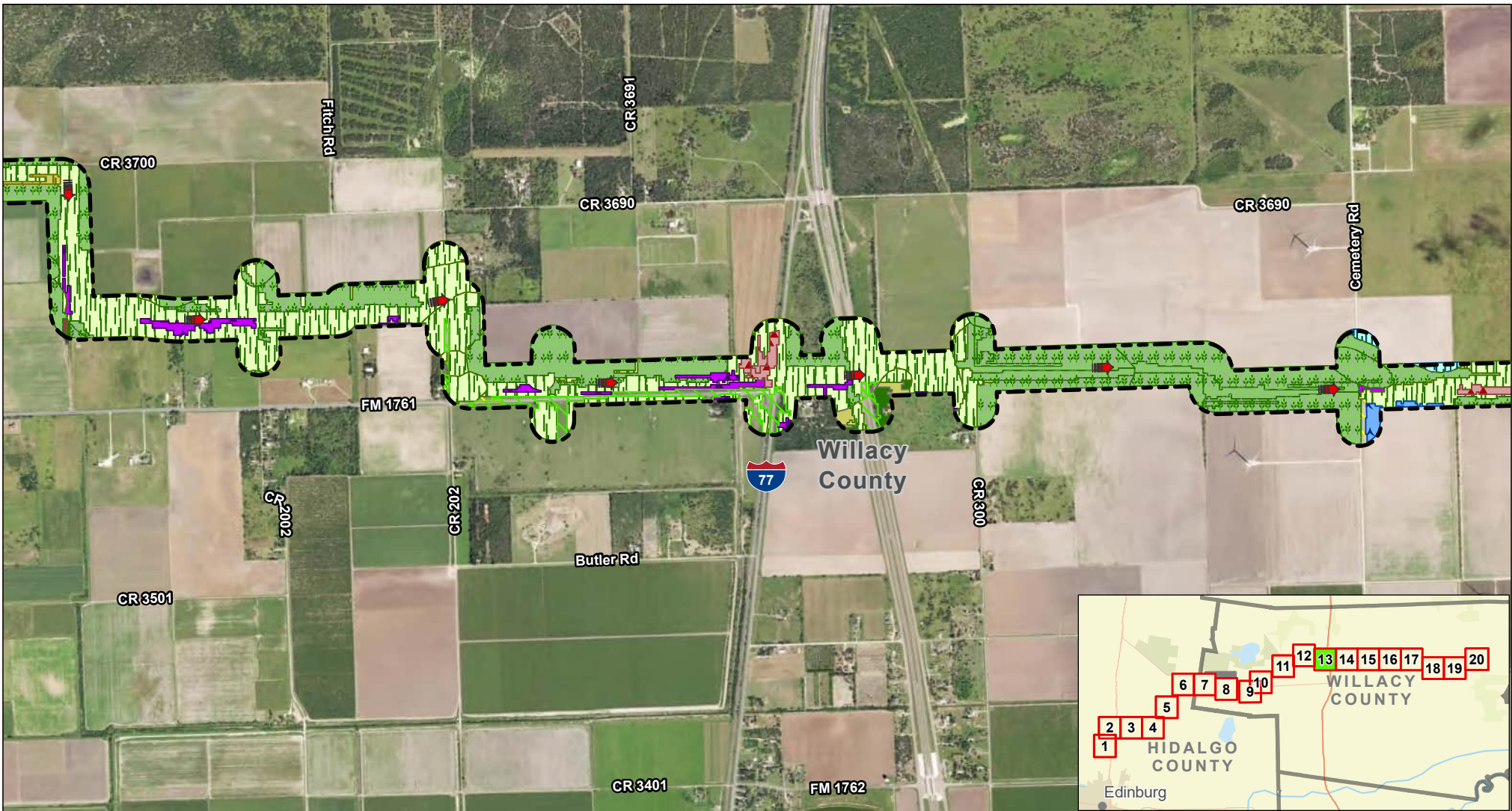


Exhibit 12 Alternative 1 EMST Map Sheet 12 of 20 Raymondville Drain Project

Author : Joel F. Aguirre Updated : 9/26/2023

DISCLAIMER: RRP Consulting Engineers makes no guarantees as to the accuracy of data used in the construction of this map.



- | | | | | |
|--|--|--|---|--|
| Row Crops | South Texas: Clayey Mesquite Mixed Shrubland | South Texas: Sandy Mesquite - Evergreen Woodland | South Texas: Sandy Mesquite Dense Shrubland | South Texas: Sandy Mesquite Woodland and Shrubland |
| South Texas: Clayey Blackbrush Mixed Shrubland | South Texas: Disturbance Grassland | | | Urban High Intensity |
| | | | | Urban Low Intensity |

Legend:

Drain Flow

Study Corridor

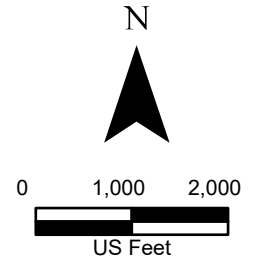
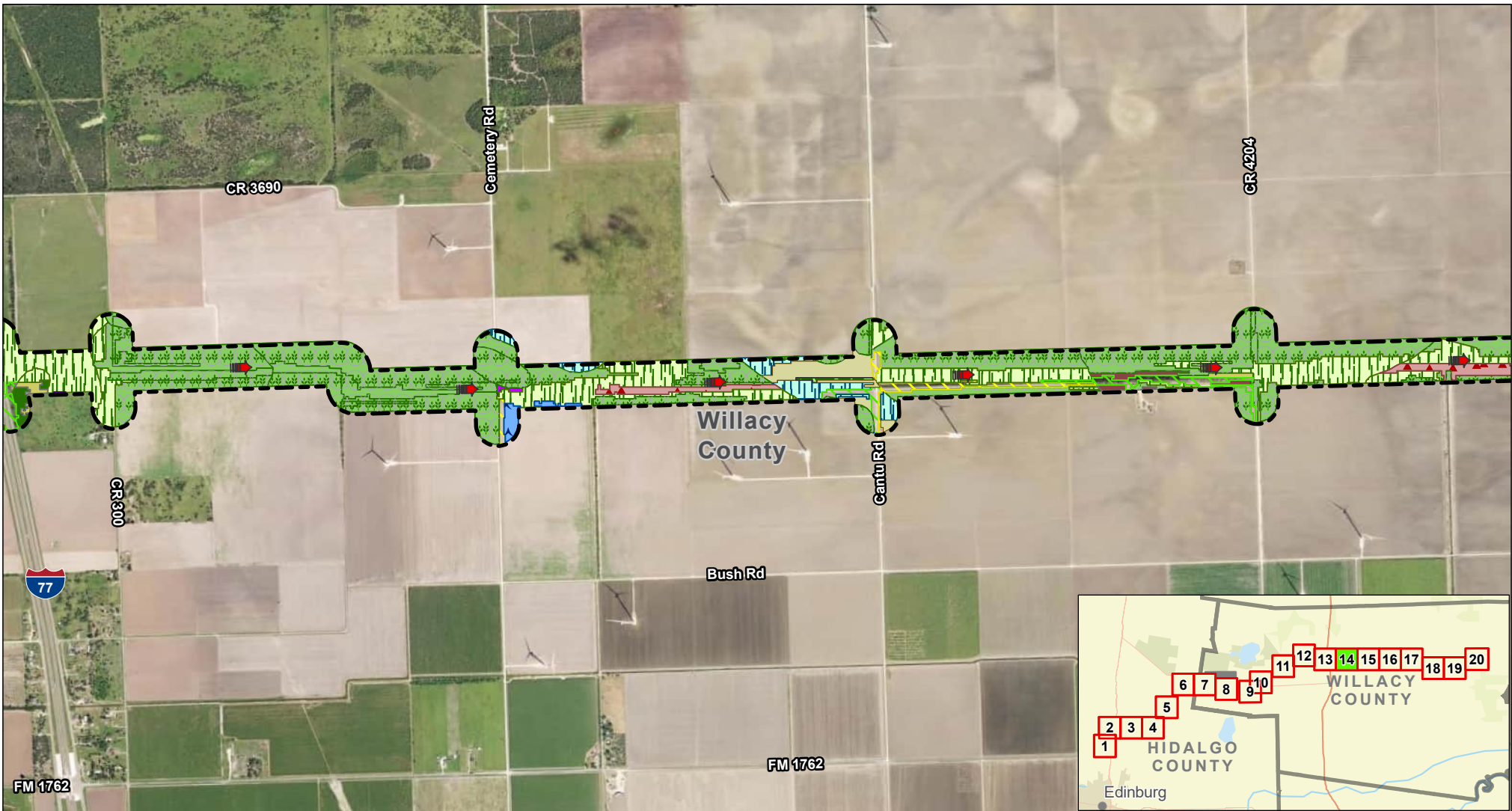


Exhibit 12 Alternative 1 EMST Map Sheet 13 of 20 Raymondville Drain Project

Author : Joel F. Aguirre Updated : 9/26/2023

DISCLAIMER: RRP Consulting Engineers makes no guarantees as to the accuracy of data used in the construction of this map.



- | | | | | | |
|--|---|--|--|---|--|
| Barren | Coastal and Sandsheet: Deep Sand Live Oak Shrubland | Row Crops | South Texas: Clayey Mesquite Mixed Shrubland | South Texas: Sandy Mesquite Dense Shrubland | South Texas: Sandy Mesquite Woodland and Shrubland |
| Coastal and Sandsheet: Deep Sand Grassland | Open Water | South Texas: Clayey Blackbrush Mixed Shrubland | South Texas: Disturbance Grassland | Urban High Intensity | Urban Low Intensity |

Legend:

Drain Flow

Study Corridor

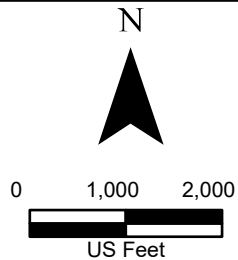
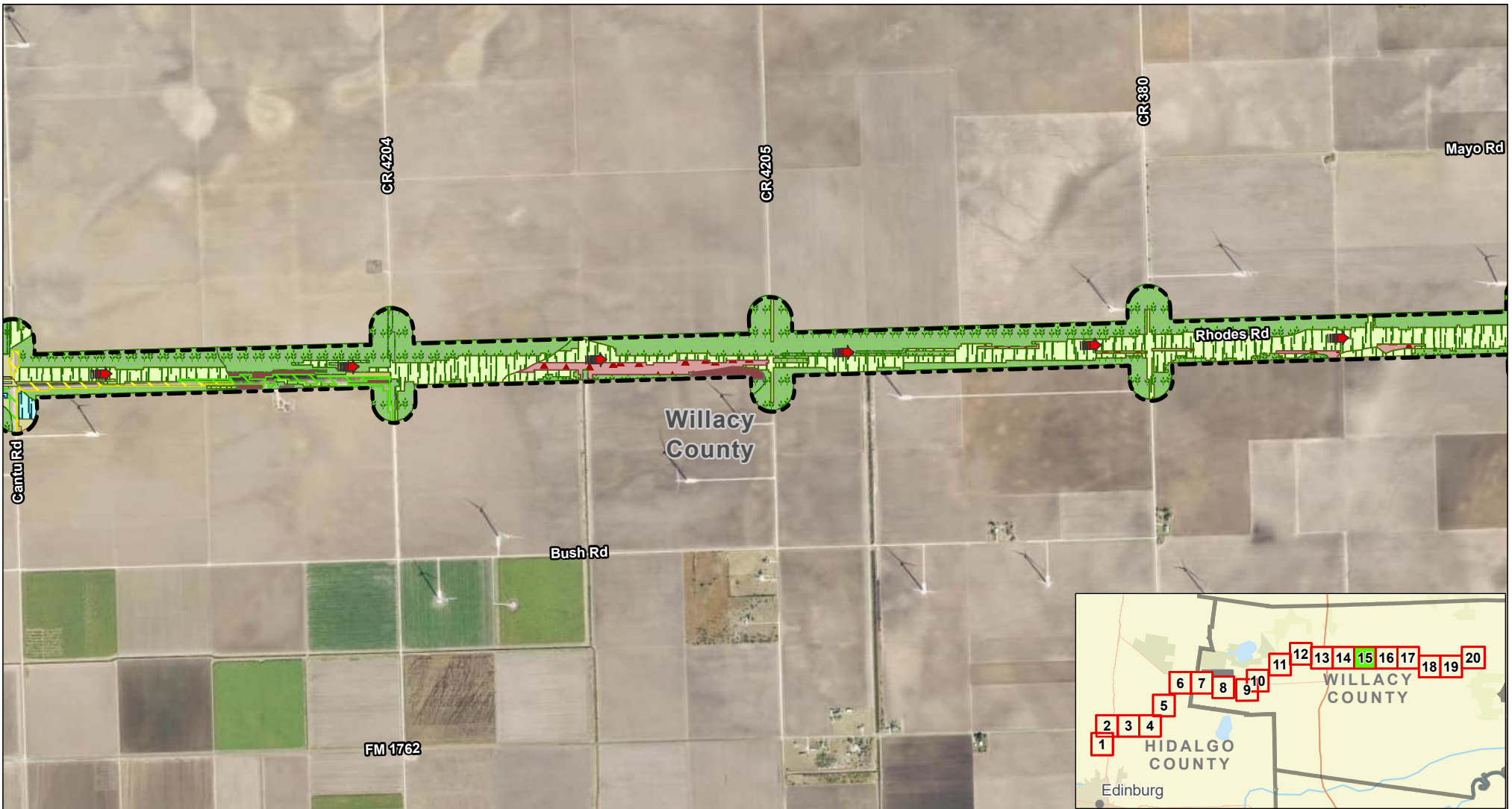


Exhibit 12 Alternative 1 EMST Map Sheet 14 of 20 Raymondville Drain Project


Author : Joel F. Aguirre Updated : 9/26/2023


DISCLAIMER: RRP Consulting Engineers makes no guarantees as to the accuracy of data used in the construction of this map.



-  Row Crops
-  South Texas: Disturbance Grassland
-  South Texas: Sandy Mesquite Dense Shrubland
-  South Texas: Sandy Mesquite Woodland and Shrubland
-  South Texas: Clayey Mesquite Mixed Shrubland
-  Urban Low Intensity

Legend:

 Drain Flow

 Study Corridor

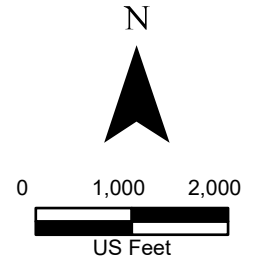


Exhibit 12 Alternative 1 EMST Map Sheet 15 of 20 Raymondville Drain Project

Author : Joel F. Aguirre Updated : 9/26/2023

DISCLAIMER: RRP Consulting Engineers makes no guarantees as to the accuracy of data used in the construction of this map.



- Row Crops
- South Texas: Clayey Mesquite Mixed Shrubland
- South Texas: Disturbance Grassland

Legend:

- Drain Flow
- Study Corridor

N

0 1,000 2,000

US Feet

HIDALGO COUNTY
WILLACY COUNTY
TX

Exhibit 12 Alternative 1 EMST Map Sheet 16 of 20 Raymondville Drain Project

Author : Joel F. Aguirre	Updated : 9/26/2023
DISCLAIMER: RRP Consulting Engineers makes no guarantees as to the accuracy of data used in the construction of this map.	

Path: S:\project\4408000_ProjectRepository\GIS\EMST_Encls\EMST_Series.aprx



- | | | | | |
|---------------------------|--|--|------------------------------------|--|
| Gulf Coast: Salty Prairie | South Texas: Clayey Blackbrush Mixed Shrubland | South Texas: Clayey Mesquite Mixed Shrubland | South Texas: Saline Lake Grassland | South Texas: Sandy Mesquite Woodland and Shrubland |
| Marsh | South Texas: Disturbance Grassland | South Texas: Sandy Mesquite Dense Shrubland | | |
| Row Crops | | | | |

Legend:

Drain Flow

Study Corridor

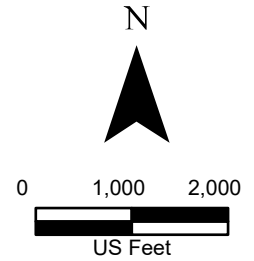
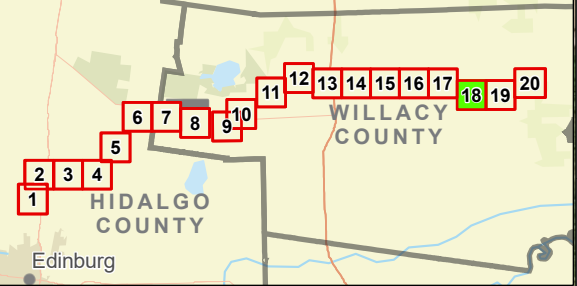
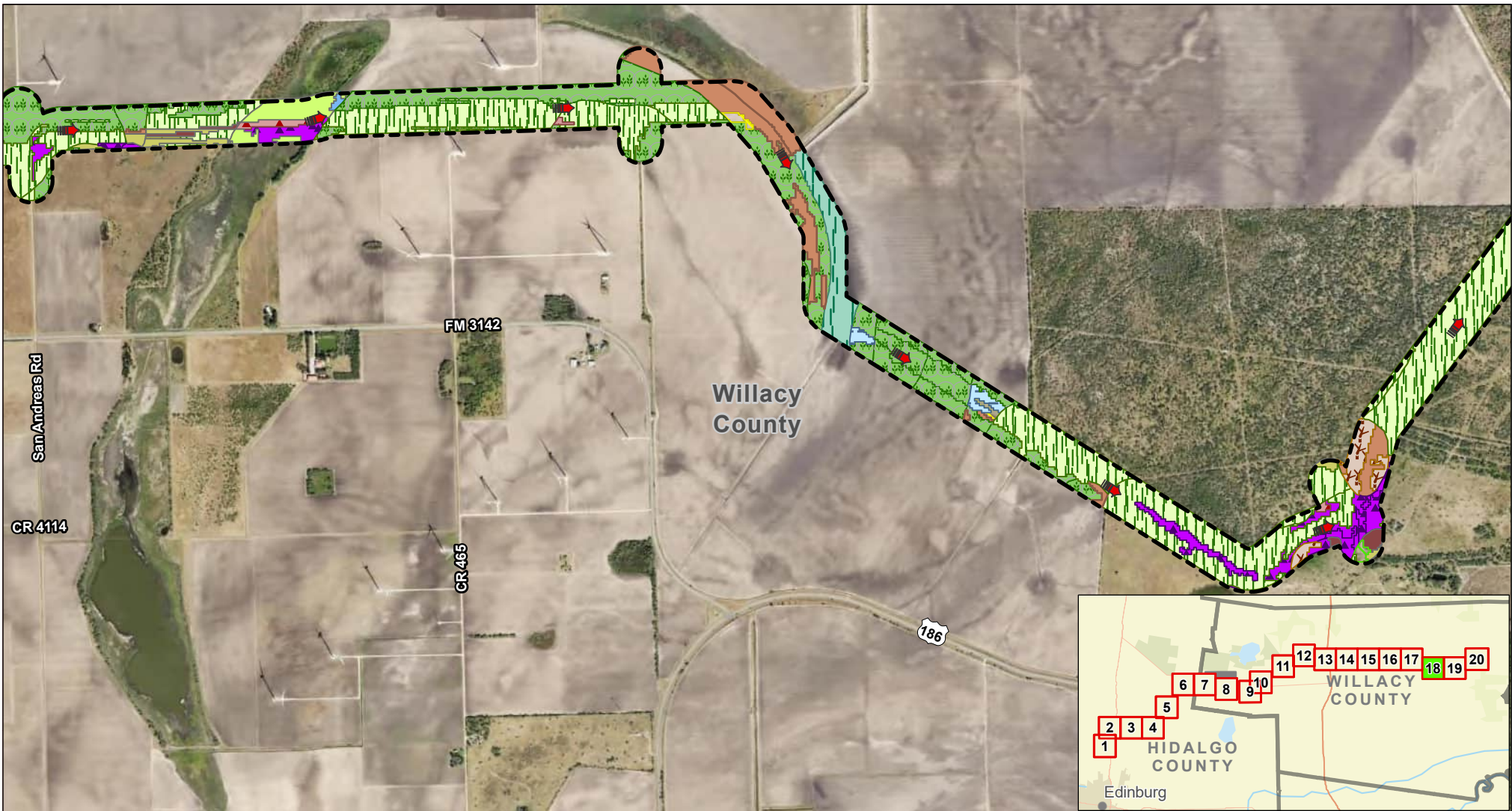


Exhibit 12 Alternative 1 EMST Map Sheet 17 of 20 Raymondville Drain Project

Author : Joel F. Aguirre Updated : 9/26/2023

DISCLAIMER: RRP Consulting Engineers makes no guarantees as to the accuracy of data used in the construction of this map.



- | | | | | | | | | | | | |
|--|---|---------------------------|-----------|--|--|------------------------------------|---------------------------------------|------------------------------------|--------------------------------|-------------------------------|----------------------|
| Coastal and Sandsheet: Deep Sand Grassland Swale Marsh | Coastal: Salt and Brackish High Tidal Marsh | Gulf Coast: Salty Prairie | Row Crops | South Texas: Clayey Blackbrush Mixed Shrubland | South Texas: Clayey Mesquite Mixed Shrubland | South Texas: Disturbance Grassland | South Texas: Loma Evergreen Shrubland | South Texas: Saline Lake Grassland | South Texas: Saline Lake Flats | South Texas: Wind Tidal Flats | Urban High Intensity |
|--|---|---------------------------|-----------|--|--|------------------------------------|---------------------------------------|------------------------------------|--------------------------------|-------------------------------|----------------------|

Legend:

Drain Flow

Study Corridor

N

0 1,000 2,000

US Feet

HIDALGO COUNTY

WILLACY COUNTY

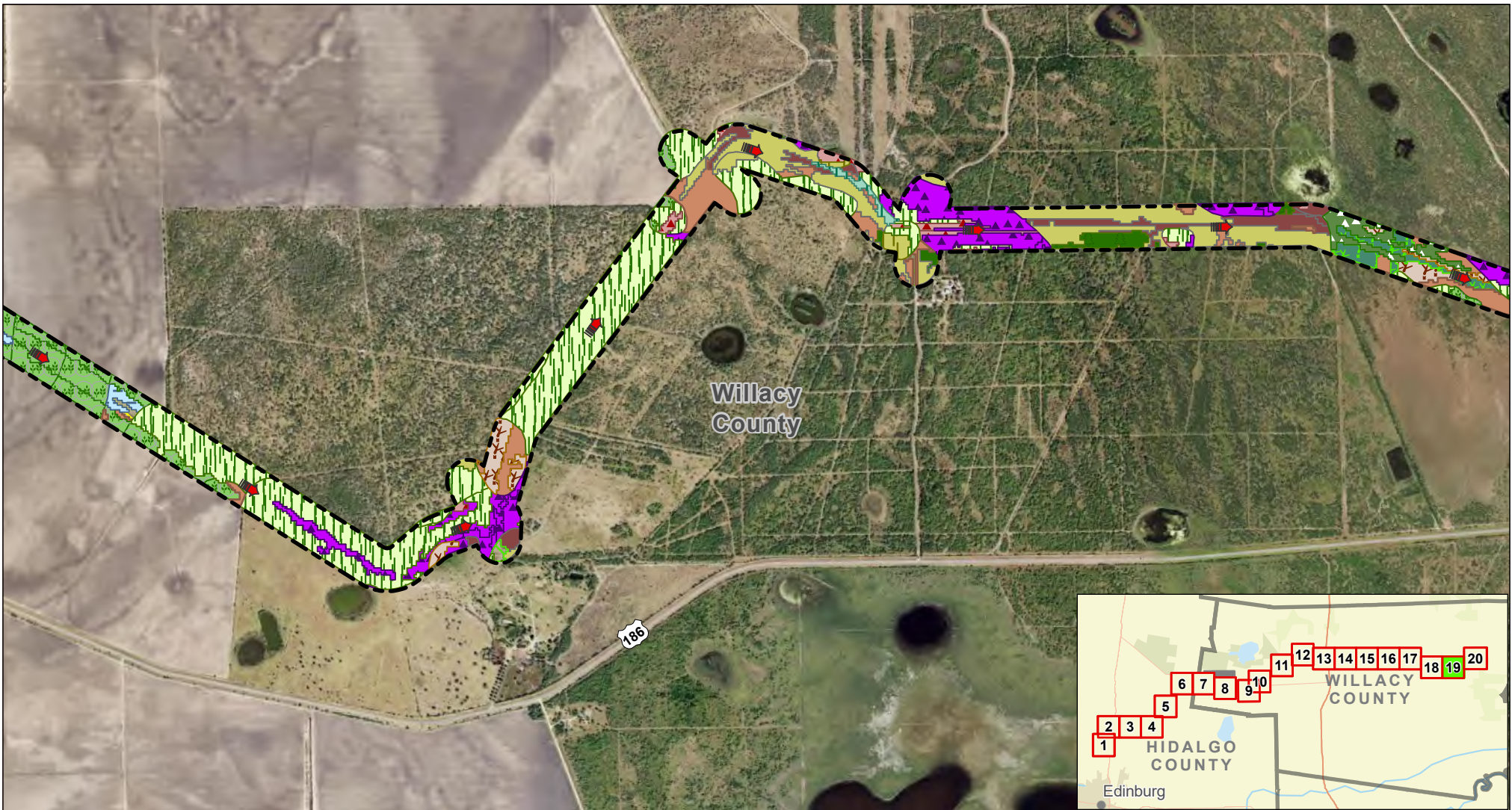
TX

Exhibit 12 Alternative 1 EMST Map Sheet 18 of 20 Raymondville Drain Project

Author : Joel F. Aguirre Updated : 9/26/2023

DISCLAIMER: RRP Consulting Engineers makes no guarantees as to the accuracy of data used in the construction of this map.

Path: S:\project\418000_P\ProjectRepository\GIS\EMST_Encls-Encl_Series.aprx



- | | | | | | |
|---|--|--|--|--|--|
| Coastal: Salt and Brackish High Tidal Marsh | Marsh | South Texas: Clayey Mesquite Mixed Shrubland | South Texas: Loma Evergreen Shrubland | South Texas: Sandy Mesquite Dense Shrubland | South Texas: Sandy Mesquite Woodland and Shrubland |
| Gulf Coast: Salty Prairie | Row Crops | South Texas: Disturbance Grassland | South Texas: Sandy Mesquite - Evergreen Woodland | South Texas: Sandy Mesquite Woodland and Shrubland | Urban Low Intensity |
| | South Texas: Clayey Blackbrush Mixed Shrubland | | | | |

Legend:

- Drain Flow
- Study Corridor

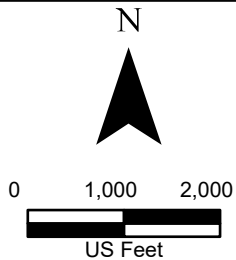
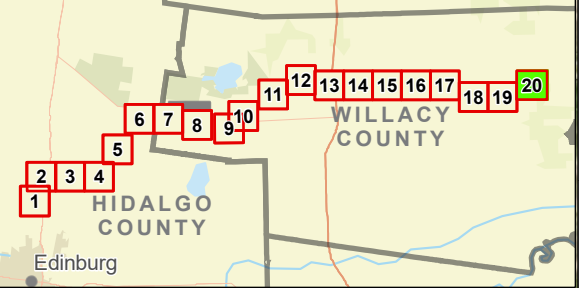
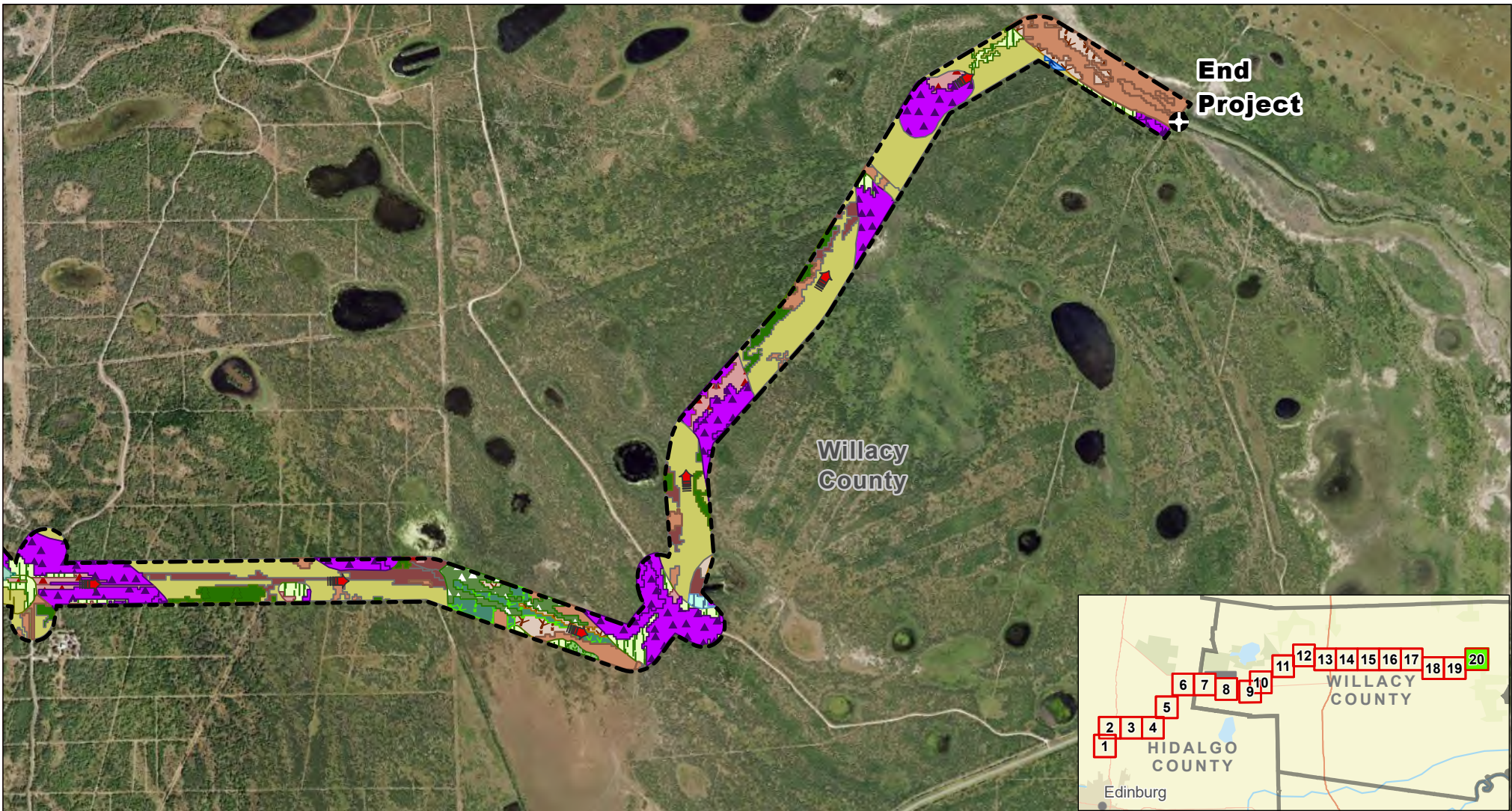


Exhibit 12 Alternative 1 EMST Map Sheet 19 of 20 Raymondville Drain Project

Author : Joel F. Aguirre Updated : 9/26/2023

DISCLAIMER: RRP Consulting Engineers makes no guarantees as to the accuracy of data used in the construction of this map.



- | | | | | | |
|--|--|--|---------------------------------------|--|--|
| Coastal and Sandsheet: Deep Sand Grassland Swale Marsh | Non-native Invasive: Saltcedar Shrubland | South Texas: Clayey Blackbrush Mixed Shrubland | South Texas: Disturbance Grassland | South Texas: Sandy Mesquite - Evergreen Woodland | South Texas: Sandy Mesquite Woodland and Shrubland |
| Gulf Coast: Salty Prairie | Open Water | South Texas: Clayey Mesquite Mixed Shrubland | South Texas: Loma Deciduous Shrubland | South Texas: Sandy Mesquite Dense Shrubland | |
| | Row Crops | | South Texas: Loma Evergreen Shrubland | | |

Legend:

Drain Flow

Study Corridor

N

0 1,000 2,000

US Feet

HIDALGO COUNTY

WILLACY COUNTY

TX

Exhibit 12 Alternative 1 EMST Map Sheet 20 of 20 Raymondville Drain Project

Author : Joel F. Aguirre Updated : 9/26/2023

DISCLAIMER: RRP Consulting Engineers makes no guarantees as to the accuracy of data used in the construction of this map.

Path: S:\project\4408000_ProjectInventory\GIS\PDF_Export\End_Series.apx